



County Road Association
OF MICHIGAN

TO LEARN
MORE!

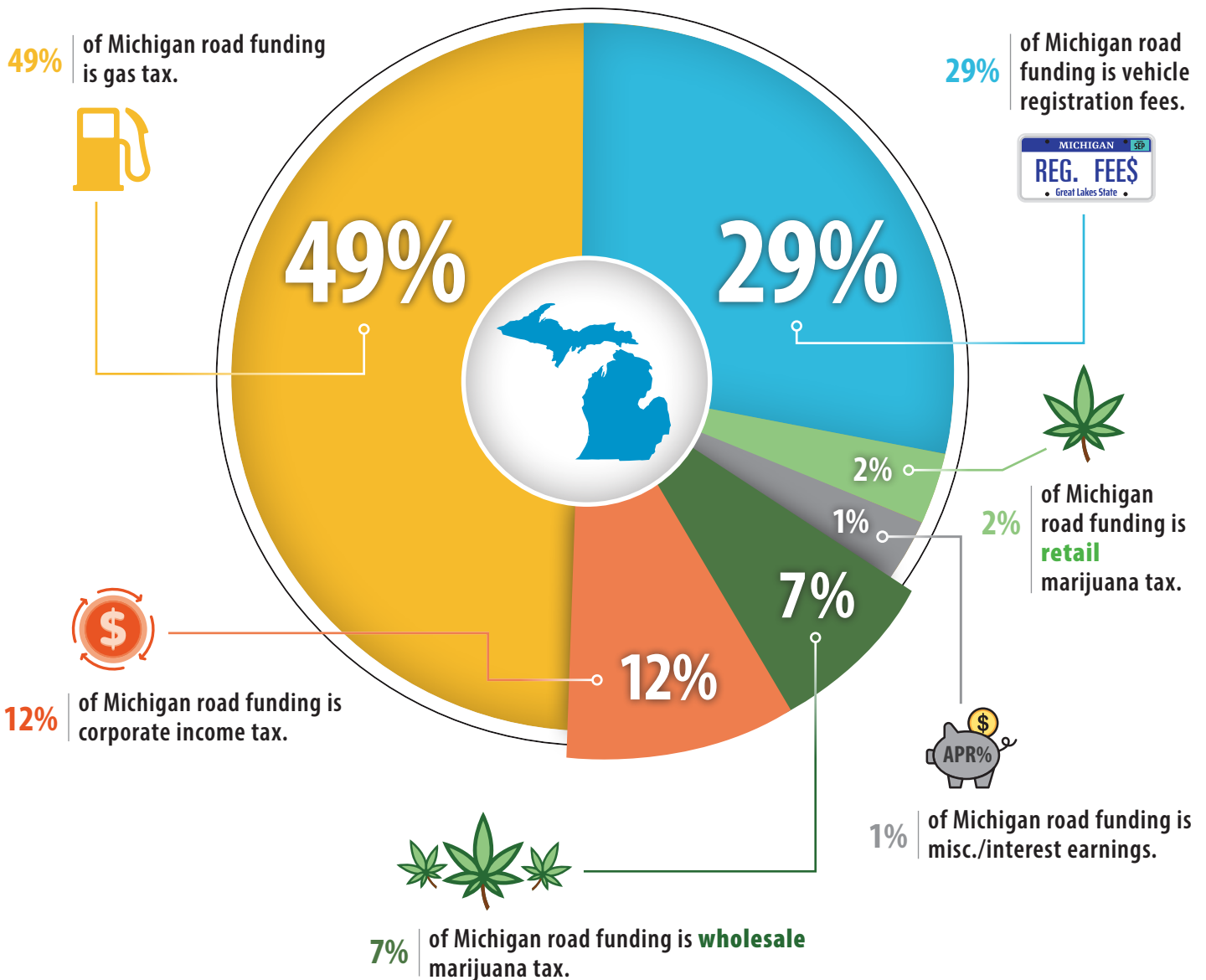


NEW LOCAL ROAD AGENCY GUIDANCE

Michigan Road Funding Sources

– Not so simple anymore

The 2026 Michigan road funding breakdown is 50% fuel tax + 29% vehicle registration fees + 12% cooperate income tax + 7% wholesale marijuana tax + 2% retail marijuana tax + 1% misc./interest earnings.



Note: Chart to update annually thru 2030

For more information contact:

County Road Association of Michigan | 101 S. Washington Square, Suite 200 | Lansing, MI 48893 | 517.482.1189